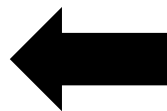




MYJ Right Side Gear Shift Turn Signal Lever Upgrade Kit Installation Manual



Installation Manual



Tutorial Manual & Video

Scan the QR code to get the manual & video

Need Help? Contact Us Now!



Call us at **1 (949) 992-7017**



Email: inquiry@hansshow.com



<https://www.hansshow.com/>

If you have any questions
Installation: 19493584793

Warnings and Disclaimers

Important notice: You are welcome to purchase our company's products. In order to protect the legitimate rights and interests of users, we hereby remind users that you must carefully read and fully understand the terms of this statement before using this product. If you use this product, your use will be deemed to be an acknowledgment of the entire content of this statement, and you agree to be bound by the following terms of this statement, and at the same time bear the consequences caused by irregular use. Hansshow Company reserves the right to update the above documents. Please be sure to operate this product according to the instructions.

Telephone: 1 (949) 992-7017

Installation: 19493584793

Email: inquiry@hansshow.com

(UTC-7/PST) 9:00AM-6:30PM (Monday to Friday)

Installation Video

Scan the QR code



Precautions for Use

- 1-Before installation, check whether the product list is complete or damaged.
- 2-The installation instructions may be slightly different from the actual operation. If there is any difference, please contact us according to the actual situation.
- 3-Warning: Please do not disassemble any parts by yourself. Any improper operation is not covered by the warranty.
- 4-Before installing the product, watch the installation video and instructions.
- 5-Check whether the installed product functions normally.

MYJ Right Side Gear Shift Turn Signal Lever Upgrade Kit Package Included

Package Included:



①	Pry Bar*1	②	Power Adapter Cable And Gear Selector Main Harness*1
③	Gear Selector Lever*1	④	Steering Column Trim Panel*1
⑤	Installation Kit*1	⑥	

NOTE: For faster installation, be sure to read these instructions carefully.

Hansshow MYJ Right Side Gear Shift Turn Signal Lever Upgrade Kit Installation Manual



1. Remove the upper trim panel of the steering column.



2. Secure the lever in place as shown in the diagram.



3. Tighten the lever mounting screw.



4. Remove the rubber seal along the edge of the right front door.

Hansshow MYJ Right Side Gear Shift Turn Signal Lever Upgrade Kit Installation Manual



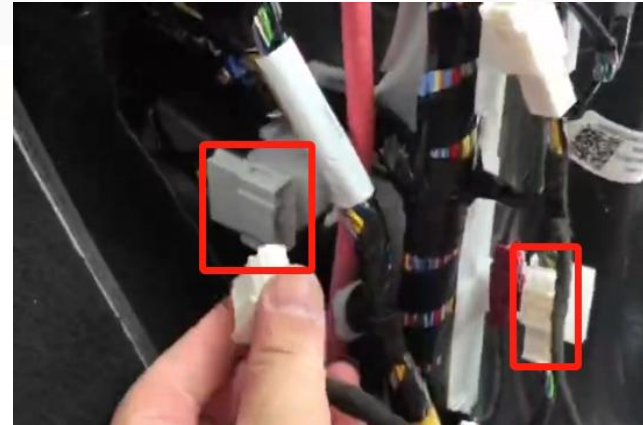
5. Remove the right front dashboard corner trim panel as shown in the diagram.



6. Remove the retaining clips of the door sill trim.



7. Remove the door sill trim as shown.



8. Connect the power adapter cable.

Hansshow MYJ Right Side Gear Shift Turn Signal Lever Upgrade Kit Installation Manual



9. Connect the main lever harness to the power cable.



10. Remove the trim panel below the central control screen.



11. Use a wire puller to guide the lever harness from the A-pillar area to below the central control screen, then route it to the driver's footwell, and finally to the top of the steering column.





12. Plug in the main lever harness.



13. Reinstall the steering column trim panel.



14. Installation complete.

Fault	Cause	solution
Will it affect the original car functions?	No	Vehicle-specific design
Why install the shift paddle?	1. Restores familiar operation habits and muscle memory. 2. Improves convenience and efficiency. 3. Enhances driving safety (based on subjective experience). 4. Compensates for the inconvenient location of the emergency shift button on the roof (the roof reading light area is not intuitive for most drivers).	
Not working after installation	Check whether the wiring harness is properly connected.	1. Reconnect the wiring harness plug. 2. Replace the paddle shifter.

Installation Manual

Hansshow provides 1-year extended warranty service.
Send us your customer number to get 1-year full warranty.

Installation Appointment: +1 (949) 358-4793

Message and Telephone: +1949-992-7017

Email: inquiry@hansshow.com

(UTC-7/PST)9:00AM-6.30PM (Monday to Friday)



www.hansshow.com

Designed by HANSSHOW

Need Help? Contact Us Now!

If you have any questions, please contact us at

  **1 (949) 992-7017**

(UTC-7/PST)9:00AM-6.30PM (Monday to Friday)

Installation: 19493584793  inquiry@hansshow.com  www.hansshow.com

Before contacting our customer support, please have your **order number, videos, or images** (if needed) ready for a fast and great solution. Send your customer number to get Hansshow **one-year** extended warranty.