

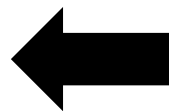
Hansshow M3/Y (Highland/Juniper) Ambient Door LED Lights Installation Manual



Installation Video



Installation Manual



Tutorial Manual & Video

Scan the QR code to get the manual & video

Need Help? Contact Us Now!



Call us at **1 (949) 992-7017**



Email: inquiry@hansshow.com



<https://www.hansshow.com/>

If you have any questions

Installation: 19493584793

Warnings and Disclaimers

Important notice: You are welcome to purchase our company's products. In order to protect the legitimate rights and interests of users, we hereby remind users that you must carefully read and fully understand the terms of this statement before using this product. If you use this product, your use will be deemed to be an acknowledgment of the entire content of this statement, and you agree to be bound by the following terms of this statement, and at the same time bear the consequences caused by irregular use. Hansshow Company reserves the right to update the above documents. Please be sure to operate this product according to the instructions.

Telephone: 1 (949) 992-7017

Installation: 19493584793

Email: inquiry@hansshow.com

(UTC-7/PST) 9:00AM-6:30PM (Monday to Friday)

Precautions for Use

- 1-Before installation, check whether the product list is complete or damaged.
- 2-The installation instructions may be slightly different from the actual operation. If there is any difference, please contact us according to the actual situation.
- 3-Warning: Please do not disassemble any parts by yourself. Any improper operation is not covered by the warranty.
- 4-Before installing the product, watch the installation video and instructions.
- 5-Check whether the installed product functions normally.

Installation Video

Scan the QR code



Package Included:



①	Power cable*1	②	1-to-4 control box*1
③	Pry tool*1	④	Door lights*4

NOTE: For faster installation, be sure to read these instructions carefully.

Hansshow M3/Y (Highland/Juniper) Ambient Door LED Lights Installation Manual



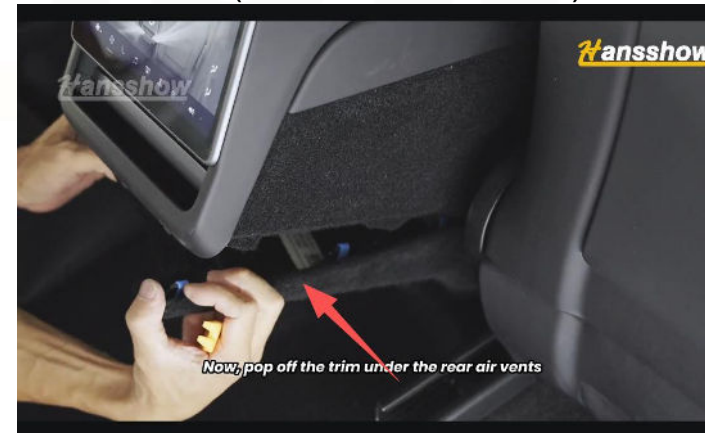
1. Insert the door light into the rubber strip along the door edge (same for all 4 doors).



2. Route the door light harness along the gap of the door sill trim to the left and right front floor area as shown (same for all 4 doors).

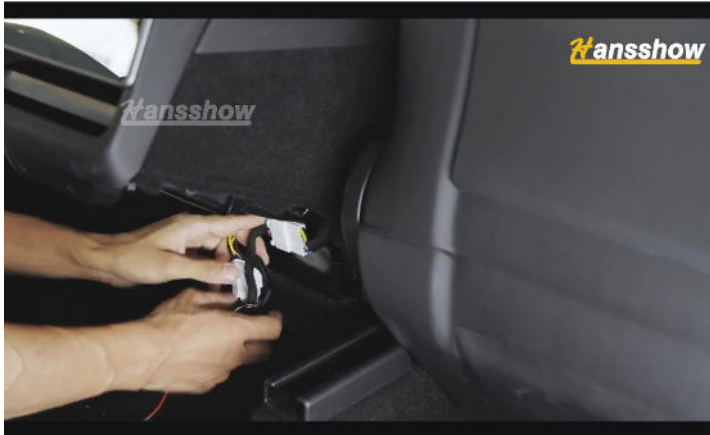


3. After installation, the white edge of the door light must remain exposed outside the door sill rubber strip (same for all 4 doors).

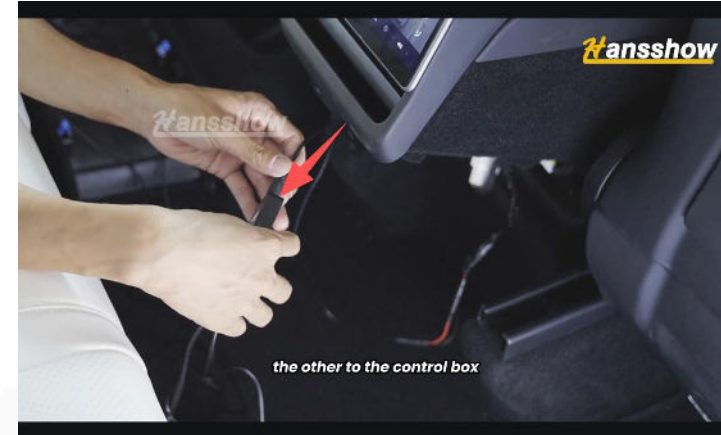


4. Remove the trim panel under the rear air vent (for M3 Highland / MY Juniper installation).

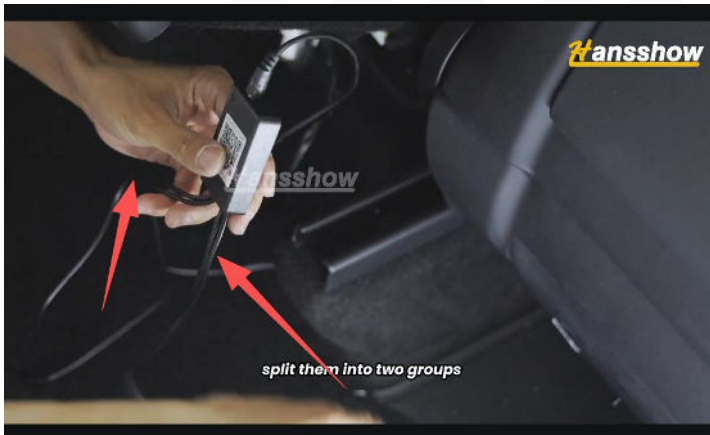
M3/Y (Highland/Juniper) Ambient Door LED Lights Installation Manual (M3 Highland / MY Juniper – Power from Rear Air Vent)



5. Connect the power cable to the plug located under the rear air vent as shown.



6. Insert the other end of the power cable into the 1-to-4 control box.



7. Split the control box harness into two wires for each side (left and right).



8. Place the control box under the original vehicle trim panel and reinstall the trim panel as shown.

Hansshow M3/Y (Highland/Juniper) Ambient Door LED Lights Installation Manual

(Model 3/Y – Power from Cigarette Lighter)



4. Plug the cigarette lighter power cable into the armrest cigarette lighter socket as shown.

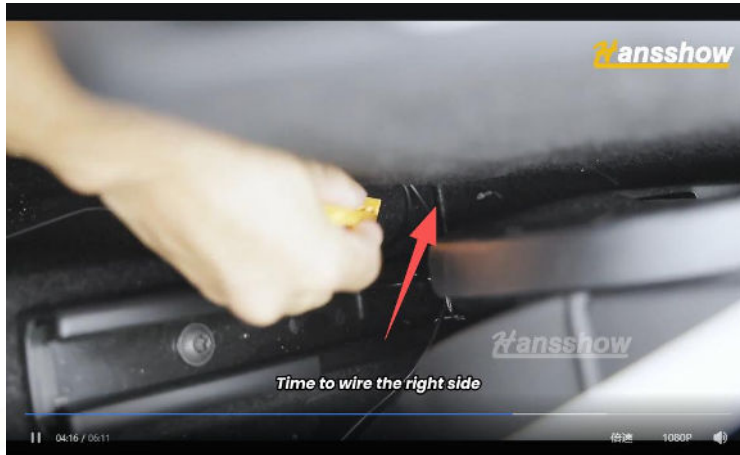


5. Route the control box harness along both sides of the armrest to the underside of the seats on both sides.



6. Close the armrest cover.

Hansshow M3/Y (Highland/Juniper) Ambient Door LED Lights Installation Manual



9.Route the control box harness along the edge of the saddle base to the seatbelt buckle area on both sides, and tuck it into the carpet seam as shown.



10.Lift the carpet under the seats and pull out the control box harness (repeat for both sides).



11.Route the harness under the seat along the carpet seam as shown (repeat for both sides).

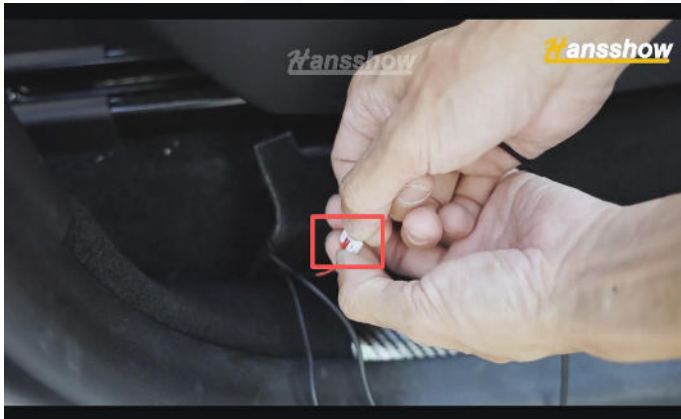
Hansshow M3/Y (Highland/Juniper) Ambient Door LED Lights Installation Manual



12. Tuck the harness under the carpet as shown (repeat for both sides).



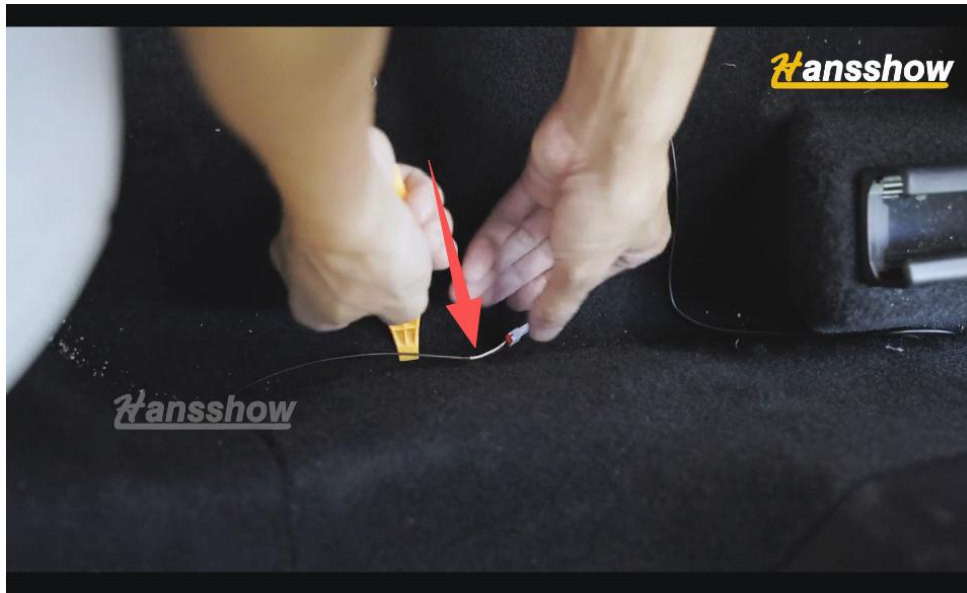
13. Pull back the outer carpet of the seats and take out the harness (repeat for both sides as shown).



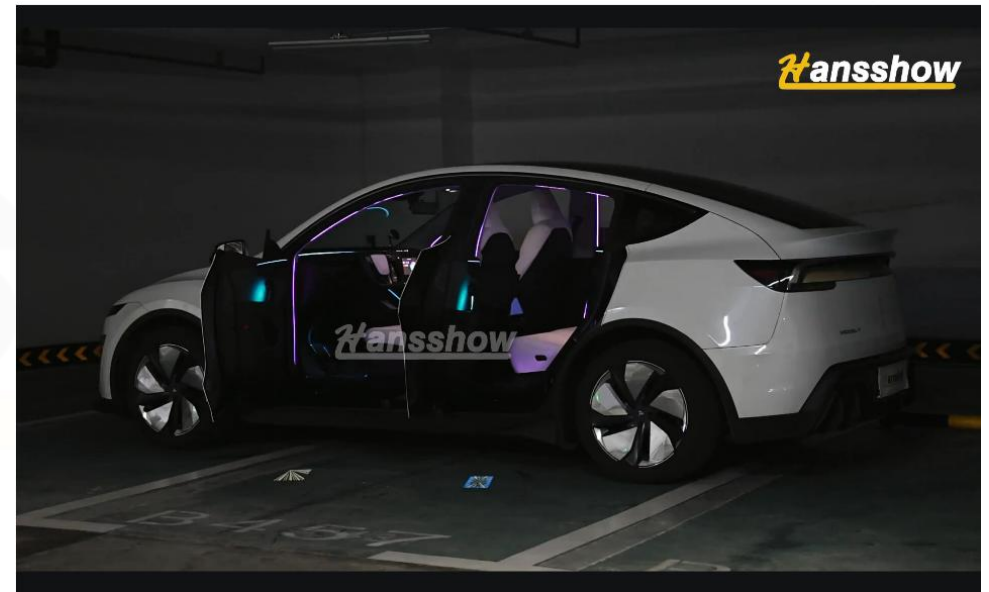
14. Connect the front door light wire with one of the control box harness wires, and hide the wiring (repeat for both sides).



15. Route the other harness wire along the door sill gap to the rear door sill (repeat for both sides).



16. Connect the rear door light wire with another control box harness wire and tuck it into the door sill gap (repeat for both sides).



17. Installation complete.

Problem	Cause	Solution
Lights not working	Harness not properly connected	Re-plug the harness
One door light not working	Harness not properly connected	Re-plug the harness
One door light color not synchronized with others	Harness pinched or wiring sequence incorrect	Re-arrange the harness, align wire order with other doors
Control Method	Mobile APP (Magic-Lantern Light)	

Hansshow provides 1-year extended warranty service.
Send us your customer number to get 1-year full warranty.

Message and Telephone: +1949-992-7017

Installation Appointment: +1 (949) 358-4793

Email: inquiry@hansshow.com

(UTC-7/PST)9:00AM-6.30PM (Monday to Friday)



www.hansshow.com

Designed by HANSSHOW

Need Help? Contact Us Now!

If you have any questions, please contact us at

  **1 (949) 992-7017**

(UTC-7/PST)9:00AM-6.30PM (Monday to Friday)

Installation: 19493584793  inquiry@hansshow.com  www.hansshow.com

Before contacting our customer support, please have your **order number, videos, or images** (if needed) ready for a fast and great solution. Send your customer number to get Hansshow **one-year** extended warranty.