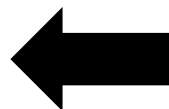




## MYJ Center Console Wireless Charger With Ambient Light & Smart Physical Button Installation Manual



Installation Manual



### Tutorial Manual & Video

Scan the QR code to get the manual & video

## Need Help? Contact Us Now!



Call us at **1 (949) 992-7017**



Email: [inquiry@hansshow.com](mailto:inquiry@hansshow.com)



<https://www.hansshow.com/>

If you have any questions  
Installation: 19493584793

## Warnings and Disclaimers

Important notice: You are welcome to purchase our company's products. In order to protect the legitimate rights and interests of users, we hereby remind users that you must carefully read and fully understand the terms of this statement before using this product. If you use this product, your use will be deemed to be an acknowledgment of the entire content of this statement, and you agree to be bound by the following terms of this statement, and at the same time bear the consequences caused by irregular use. Hansshow Company reserves the right to update the above documents. Please be sure to operate this product according to the instructions.

**Telephone: 1 (949) 992-7017**

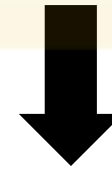
**Installation: 19493584793**

**Email: [inquiry@hansshow.com](mailto:inquiry@hansshow.com)**

**(UTC-7/PST) 9:00AM-6:30PM (Monday to Friday)**

## Installation Video

Scan the QR code



## Precautions for Use

- 1-Before installation, check whether the product list is complete or damaged.
- 2-The installation instructions may be slightly different from the actual operation. If there is any difference, please contact us according to the actual situation.
- 3-Warning: Please do not disassemble any parts by yourself. Any improper operation is not covered by the warranty.
- 4-Before installing the product, watch the installation video and instructions.
- 5-Check whether the installed product functions normally.

**Package Included:**



①	Wireless Charging Physical Button Frame ×1	②	MYJ Lower Bracket ×2
③	MYJ Bracket ×2 (After June 2024)	④	MYJ Bracket ×2 (Before June 2024)
⑤	MYJ Upper Bracket ×2	⑥	Bracket Mounting Screws ×6
⑦	Power Cable ×1	⑧	Prybar*1

NOTE: For faster installation, be sure to read these instructions carefully.

# **Hansshow** MYJ Center Console Wireless Charger With Ambient Light & Smart Physical Button Installation Manual



1. Remove the wireless charging surface frame.



2. Use a T20 screwdriver to remove the 4 screws securing the wireless charger.



3. Pull down firmly to detach the wireless charger.



4. Unplug the wireless charging power connector.

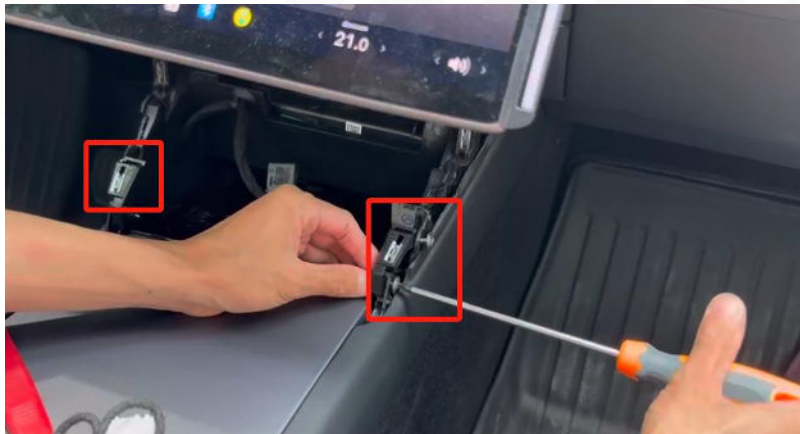
# **Hansshow** MYJ Center Console Wireless Charger With Ambient Light & Smart Physical Button Installation Manual



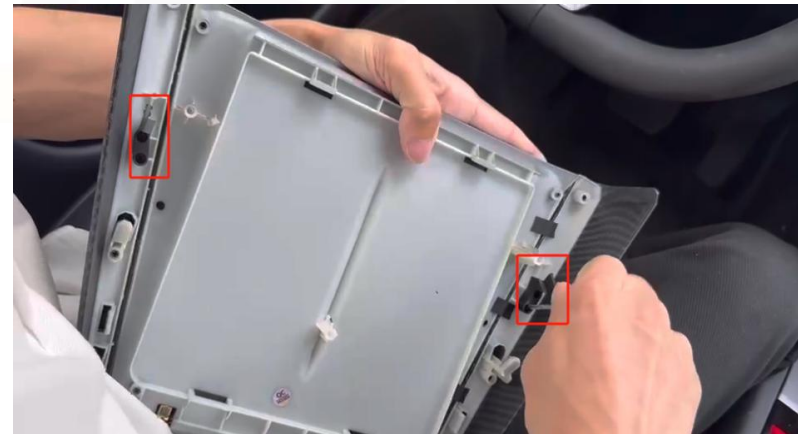
5. Remove the 3 screws securing the wireless charger (as shown).



6. Detach the wireless charging chip.



7. Install part ② (MYJ lower bracket) in the shown position, and secure it with the original screws from the vehicle's wireless charger.



8. Install part ⑤ (MYJ upper bracket) onto the physical button frame as shown.

# **Hansshow** MYJ Center Console Wireless Charger With Ambient Light & Smart Physical Button Installation Manual



9. Mount the original wireless charging chip onto the physical button frame (insert the bottom side first, then the top).



10. Reinstall the screws to fix the wireless charging chip.



11. Remove the door edge seal strip.



12. Pry off the right side triangular dashboard trim piece.

# **Hansshow** MYJ Center Console Wireless Charger With Ambient Light & Smart Physical Button Installation Manual



13. Remove the right side door sill panel clips.



14. Remove the right side door sill panel.



15. Connect the **CAN bus wire** to the plug indicated by the red frame in the diagram.

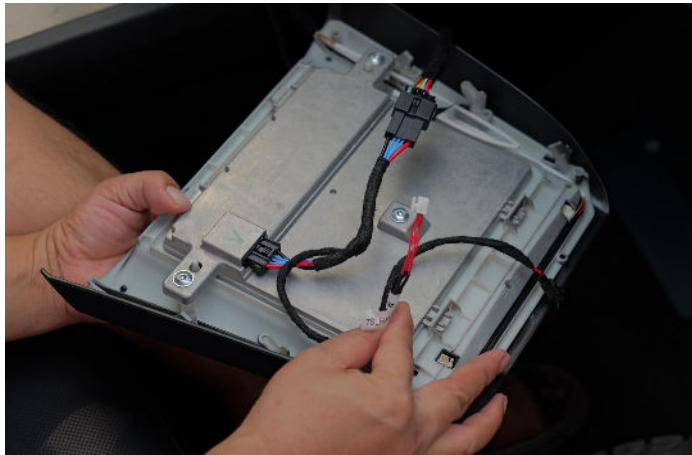


16. Remove the right side footwell trim panel.

# **Hansshow** MYJ Center Console Wireless Charger With Ambient Light & Smart Physical Button Installation Manual



17. Unplug the connector on the footwell trim.



19. Make sure all connectors are securely plugged in.



18. Connect the **power cable** to the original wireless charging plug.



20. Plug in the power connector for the wireless charging physical button frame (**pay attention to the plug orientation**).

# **Hansshow** MYJ Center Console Wireless Charger With Ambient Light & Smart Physical Button Installation Manual



21. Finally, install the wireless charging physical button.



22. Installation complete

Ambient Light

Wireless  
Charging

Parkin  
g Gear  
(P)

Drive  
Gear (D)

Right  
Rear  
Door

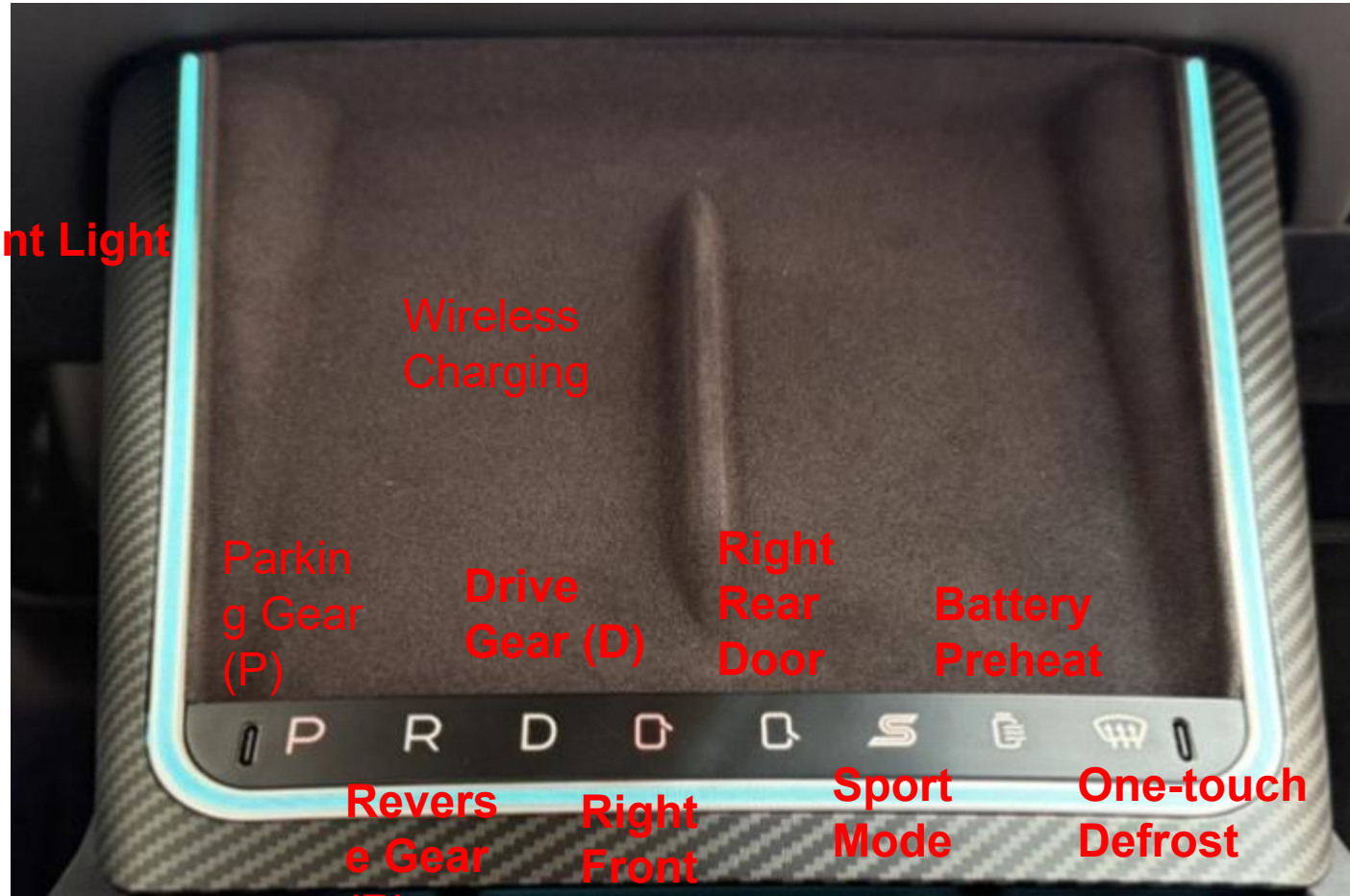
Battery  
Preheat

Revers  
e Gear  
(R)

Right  
Front  
Door

Sport  
Mode

One-touch  
Defrost





# MYJ Center Console Wireless Charger With Ambient Light & Smart Physical Button FAQ

Fault	Cause	solution
Ambient light not working	Ambient light connector is not securely plugged in	Check if the ambient light connector on the physical button panel is loose
Buttons not responding	<b>CAN bus cable</b> is not properly connected	Unplug and reconnect the CAN bus cable
Vehicle key not detected	Power cable connector is not securely plugged in	Unplug and reconnect the power cable
Wireless charging not working	Power cable connector is not securely plugged in	Unplug and reconnect the power cable

# Installation Manual

Hansshow provides 1-year extended warranty service.  
Send us your customer number to get 1-year full warranty.

**Installation Appointment: +1 (949) 358-4793**

**Message and Telephone: +1949-992-7017**

**Email: [inquiry@hansshow.com](mailto:inquiry@hansshow.com)**

**(UTC-7/PST)9:00AM-6.30PM (Monday to Friday)**



[www.hansshow.com](http://www.hansshow.com)

Designed by HANSSHOW

## Need Help? Contact Us Now!

If you have any questions, please contact us at

  **1 (949) 992-7017**

(UTC-7/PST)9:00AM-6.30PM (Monday to Friday)

Installation: 19493584793     inquiry@hansshow.com     www.hansshow.com

Before contacting our customer support, please have your **order number, videos, or images** (if needed) ready for a fast and great solution. Send your customer number to get Hansshow **one-year** extended warranty.